

SLIPPERS

CATALOGUE



Hotel amenities supplier since 1980



Ming Fai, your trusted travel companion!

GROUP PROFILE

Founded in 1980 Hong Kong, Ming Fai Group is the preferred destination for an international enterprise specializing in travel amenities with peerless quality. Ming Fai Group is the first choice of customer, delivering high quality and trusted 5-star solutions to its global clients, building long-term relationships and providing exceptional services to internationally renowned hotel brands, airlines, hospitality and personal care industries.

In November, 2007, Ming Fai International Holdings Limited was successfully listed on the Main Board of The Stock Exchange of Hong Kong Limited (HKSE:3828), becoming the first hotel amenities supplier to go public in the PRC region.

Ming Fai has 5 production bases where the main industrial zone base is in Shenzhen, and recently opened factories in India and Cambodia. The global purchasing and manufacture enable Ming Fai not only to focus on the development and manufacture of high-end hotel bath room amenities, but also to provide competitive prices and high quality product to customers.

In addition, Ming Fai has offices in Singapore, Malaysia, Australia, Hong Kong, and major cities in China. The sales sites are located throughout the Asia-Pacific region. The logistics and distribution capabilities cover the world and serve the world's leading hotel management groups.

With the pace of a diversified development, in 2014, Ming Fai established the Total Solution Service Center displays products range from guest room accessories, small appliances, dining & Kitchen supplies, banquet tables, bedding to glassware, ceramics, cleaning equipment and supplies, to provide an overall solution and create a true sense of the "five-star service experts."

Corporate Social Responsibility is important to Ming Fai. We actively respond to our customers' concern and feedback by providing environmental solutions and advice for their projects.

Our dedicated, experienced and trusted management team and staff at Ming Fai will offer you with industry leading and high quality products with the most efficient, professional and comprehensive service!



Ming Fai Enterprise (Cambodia) Co.,LTD



Ming Fai Enterprise (Cambodia) Co.,LTD is a subsidiary of Ming Fai Group in Somrourng Tong, Cambodia. Its production base is 50km from the city center, 35 km from Phnom Penh Airport and covers an area of 50,000 square meters. The production base has non-woven fabric machinery and equipment, which can be used to produce all kinds of non-woven fabric products, whether it is air bags, eye masks, textile bags, slippers, plastics, and cosmetics production, advanced production equipment with an experienced team, making Ming Fai Cambodia able to provide to customers the most cost-effective products.

The quality standards and IQC workflow of Tengxin strictly follow the SOP guidelines provided by Ming Fai Group and passed the factory inspection certification of the International Labor Organization BFC and SMETA. By the global logistics distribution, and the sales network in APAC major cities, Ming Fai Cambodia is serving the well-known hotel management groups around the world.



JW MARRIOTT
MACAULTY
澳門JW萬豪酒店

GLOBAL PARTNERS

Bespoke design for internationally renowned
hotel brands with high-quality materials



MF-GP-0001



Elegant and luxurious
every step shows the
art of living

Fabric	Cut Velvet
Sole	EVA
Binding	Plain Fabric



MF-GP-0003



MF-GP-0004

Fabric	Towel
Sole	EVA
Binding	TC Strip



MF-GP-0005

Fabric	Cut Velvet
Sole	EVA
Binding	TC Strip



MF-GP-0002

Let the power of details
decorates an exquisite
lifestyle

Fabric	Twill Fabric
Sole	EVA
Binding	TC Strip





MF-GP-0006

Fabric	Cut Velvet
Sole	EVA
Binding	TC Strip

A pleasant life
comes from the
softness and gentle
of your heart



MF-GP-0008

Fabric	Cut Velvet
Sole	EVA
Binding	TC Strip



MF-GP-0023

Fabric	Cut Velvet
Sole	Plastic Dot Fabric
Binding	TC Strip

Relax and enjoy
your leisure time



MF-GP-0024

Fabric	Cut Velvet
Sole	Plastic Dot Fabric
Binding	TC Strip



MF-GP-0020

Fabric	Coral Fleece
Sole	Plastic Dot Fabric
Binding	Non-woven Strip

Telling your brand story
by art crafted logo



Fabric	Coral Fleece
Sole	Plastic Dot Fabric
Binding	Non-woven Strip

MF-GP-0021



Fabric	Coral Fleece
Sole	Plastic Dot Fabric
Binding	Non-woven Strip

MF-GP-0020



Fabric	Coral Fleece
Sole	Plastic Dot Fabric
Binding	Non-woven Strip

MF-GP-0022



MF-GP-0010

Fabric	Coral Fleece
Sole	Plastic Dot Fabric
Binding	Webbing Ribbon



MF-GP-0011

Fabric	Coral Fleece
Sole	EVA
Binding	TC Strip



MF-GP-0014

Deliver your
signature style by
co-branded project

Fabric	Satin
Sole	Plastic Dot Fabric
Binding	TC Strip



MF-GP-0013

Modern design creates a luxurious
fashion revolution



MF-NP-0013

Fabric	Gold Velvet
Sole	Plastic Dot Fabric





CLASSIC SERIES

Long-lasting style
Stable and adequate solutions
A variety of choices
Easy to match



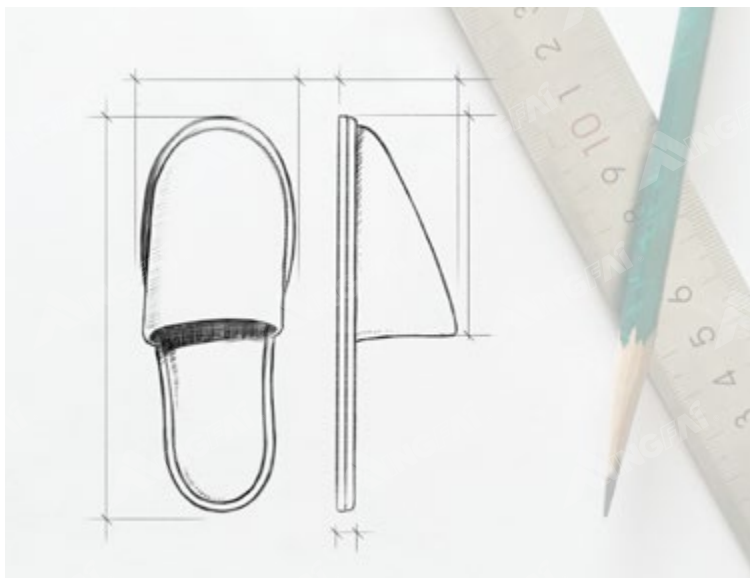


MF-SP-0001

Fabric	Linen
Sole	EVA
Binding	Non-woven Strip

Classic is everlasting...

Adopt the classic models of standard sizing
Satisfy the needs for everyone



Standard Size Comparison Table

	Men's	Women's	Children's
Length	300mm	280mm	230mm
Width	120mm	110mm	90mm
Thickness	5mm	5mm	5mm

Remarks: Customized orders are accepted.



MF-NP-0003

Fabric	Terry
Sole	Reticulate Sole
Binding	Non-woven Strip



Fabric	Linen
Binding	Non-woven Strip

MF-SP-0002



Fabric	Neoplane Fabric
Sole	EVA
Binding	Non-woven Strip

MF-SP-0004



MF-SP-0005



MF-SP-0006

Fabric	Cut Velvet
Sole	EVA
Binding	Webbing Ribbon



Fabric	Linen
Sole	EVA
Binding	TC Strip

MF-SP-0007



MF-SP-0008

	MF-SP-0008	MF-SP-0009	MF-SP-0010
Fabric	Waffle Cloth	Waffle Cloth	Waffle Cloth
Sole	EVA	EVA	EVA
Binding	TC Strip	TC Strip	TC Strip

Classics...
Waffle texture,
A touch of creativity



MF-SP-0009



MF-SP-0010



MF-SP-0011

Fabric	Superior Velvet
Sole	EVA+Rubber Coating Sole
Binding	Webbing Ribbon



Fabric	Cut Velvet
Sole	EVA+Rubber Coating Sole
Binding	Webbing Ribbon

MF-SP-0012

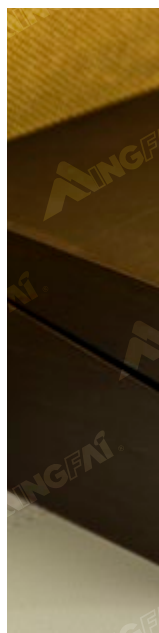


Fabric	Cut Velvet
Sole	EVA+Rubber Coating Sole
Binding	Webbing Ribbon

MF-SP-0013



MF-SP-0014



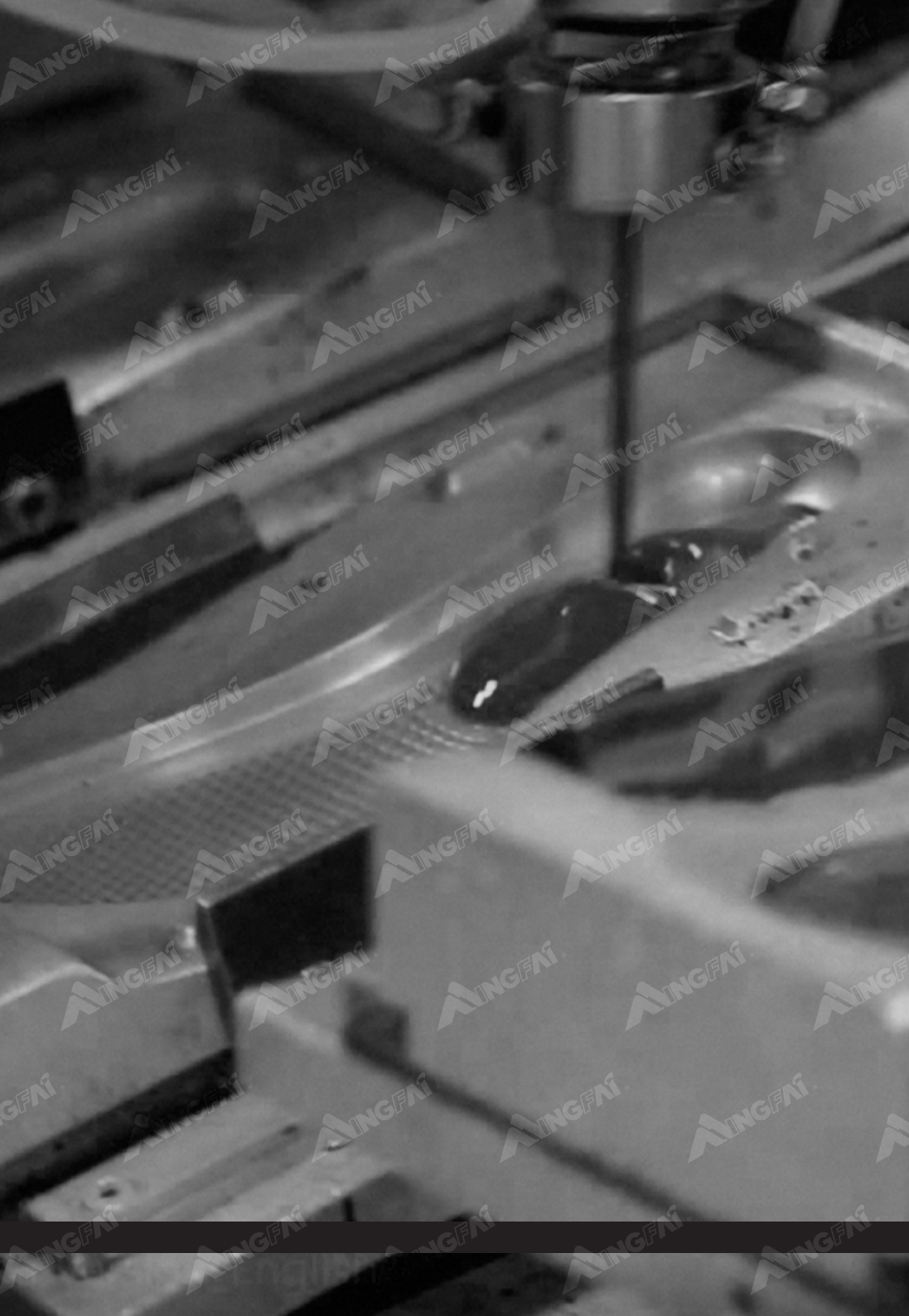
MF-SP-0015



MF-SP-0016



MF-SP-0017



LEISURE SERIES



Get closer to nature in simplicity
feeling life in a peaceful way



MF-NP-0004

Fabric	Bamboo Pattern fabric
Sole	EVA+Rubber Coating Sole
Binding	TC Strip





MF-NP-0001

Fabric	Felt
Sole	EVA+Rubber Coating Sole
Binding	Non-woven Strip



MF-NP-0007

Printed in delicate patterns,
understated elegance

Fabric	Felt
Sole	EVA+Rubber Coating Sole
Binding	Non-woven Strip





MF-NP-0011



MF-NP-0010

Fabric	Felt
Sole	IXPE
Binding	TC Strip



MF-NP-0009

Fabric	Felt with pattern
Sole	IXPE
Binding	TC Strip



Simple design highlighted
with candy-like colors



MF-NP-0016



MF-NP-0018



MF-NP-0020



MF-NP-0019



MF-NP-0017



MF-NP-0015



THEME SERIES

Let your theme stand out

*"Sometimes, we need
different things in life, we
need different challenges that
will give us that little boost."*

Light and simple
a lifestyle young people like





MF-RP-0004



MF-RP-0003



MF-RP-0005



MF-RP-0009

Recalling summer memories...



Fabric	Straw Mat & EVA
Sole	EVA
Binding	TC Strip



Fabric	EVA
Sole	EVA

MF-RP-0008



Fabric	Straw Mat + Velvet
Sole	EVA
Binding	TC Strip

MF-RP-0007



Fabric	PU
Process	One Piece Of Felt

Streamlined and principled
adopt european design process
create a cool style in lightweight



MF-RP-0011



MF-RP-0012



MF-RP-0019

Children's series...
joyful and lovely

Fabric	Coral Fleece
Sole	EVA
Binding	Non-woven Strip



Fabric	Cut Velvet
Sole	Plastic Dot Sole
Binding	Webbing Ribbon

MF-RP-0015



Fabric	Gold Velvet
Sole	Plastic Dot Sole

MF-RP-0016



Fabric	Coral Fleece
Sole	EVA
Binding	TC Strip

MF-RP-0018



Fabric	Waffle Cloth
Sole	EVA
Binding	TC Strip

MF-RP-0017



Fabric	Coral Fleece
Sole	Plastic Dot Fabric
Binding	Webbing Ribbon

MF-RP-0020



Fabric	Terry
Sole	EVA
Binding	TC Strip

MF-RP-0021



ECO-FRIENDLY SERIES

Natural and green materials



[Cotton]

Xinjiang organic cotton

It is natural, soft and elastic

Stepping and feel the softness of
cotton... just relax in comfort



Fabric	Organic Cotton
Sole	EVA
Binding	TC Strip

MF-NP-0021

Made of 100% Organically Grown Cotton

Guarantee a soft touch comfort

Durable with superior quality, it can be cleaned and reused

Create a memorable experience for your guests



[Linen]

Natural linen fabric

Dry, breathable, and not easy to go out of shape

A pair of slipper that is breathe and comfortable



MF-NP-0022



[Felt]

Extremely flexible, high quality materials
without harmful substances

Smart manufacturing: one stitch one slipper



MF-NP-0014
Felt

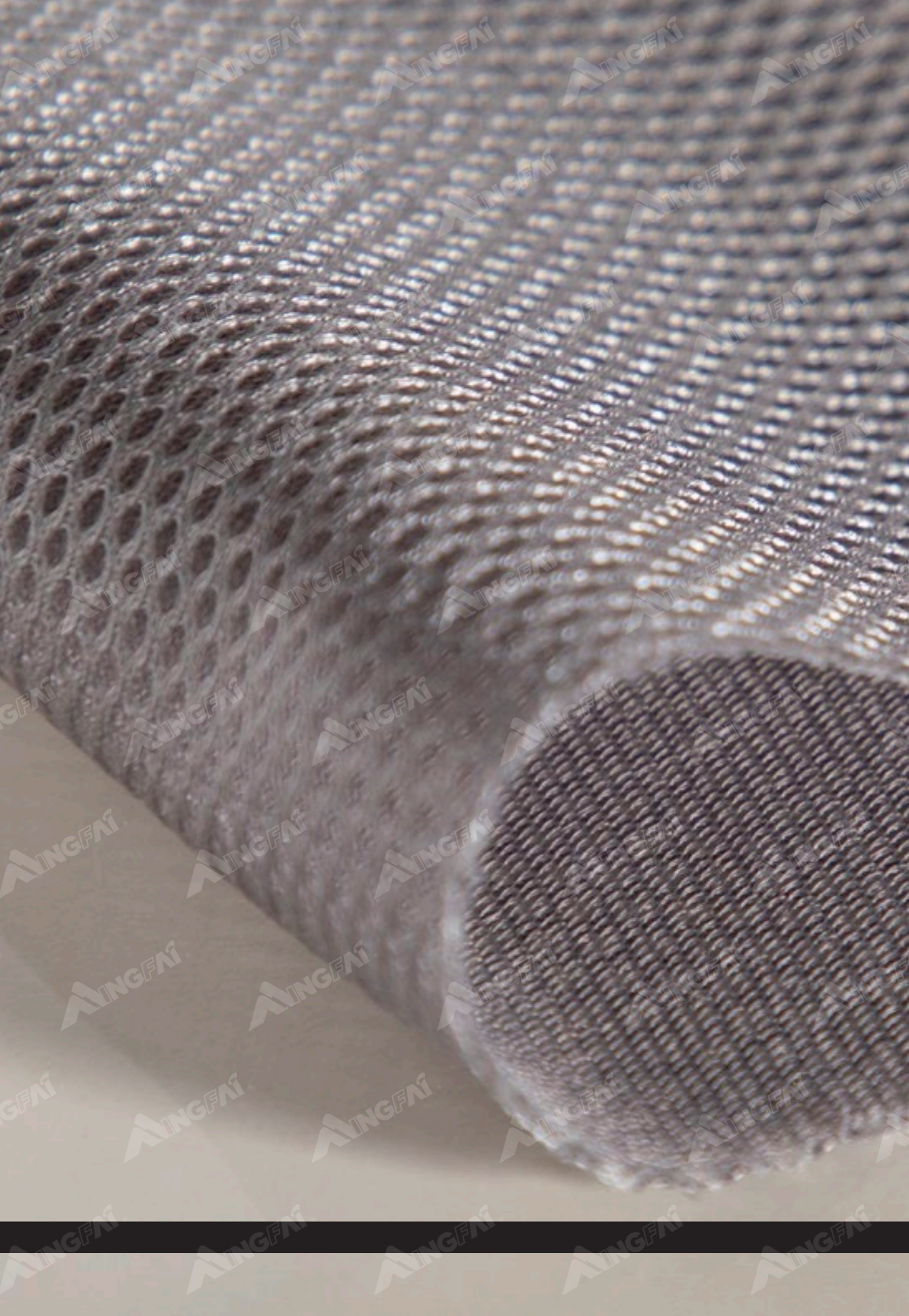
There are many slippers that are discarded in once.

By using ingenious craftsmanships and creative solutions, Ming Fai turns disposable slippers into gifts that guests should be encouraged to take it home. Reduce carbon emissions while extending the joy of the journey.



Fabric	Linen & Straw Mat
Sole	EVA
Binding	Linen

MF-NP-0015



TEXTURE AND WORKMANSHIP



Here at Ming Fai, we offer you a whole variety
of models, materials, colors

Fabric Selection

Close to you...

I choose to be comfortable and look good.

Worsted



Cut Velvet



Coral Fleece



Terry



Non-Woven Fabric



Cotton Velour



Nap Fabric



Neoplane Fabric



Superior Velvet



Waffle Cloth

Fabric
MOQ: 3000~5000



Satin



Linen



Cut Velvet



Double Fleece



Knit Fabric



Nap Fabric

Dyed Fabric
MOQ: 10000

Workmanship of logo



Embroidery



Rubber Printing



Silkscreen Printing

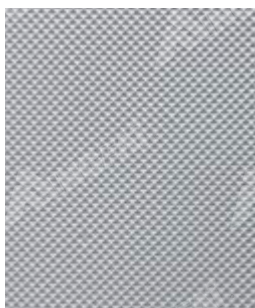


Woven / Printing Label

Sole Matching

Keep steady and move forward...

Leaf Pattern



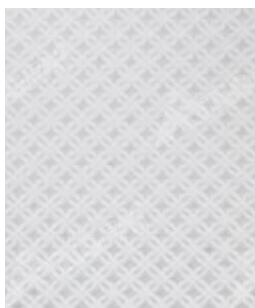
Molding Diamond Pattern



Pressing Diamond Pattern



Ripple-Wave Pattern



Pine-Apple Pattern



Leaf Pattern



Bone Pattern



T Pattern



Pit Pattern



Dot Pattern

Rubber Sole



Rhombic

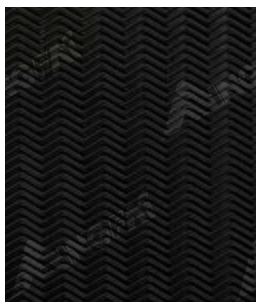


Egg Pattern



Dot Pattern

Rubber Coating Sole



Ripple-Wave Pattern



Molding Diamond Pattern

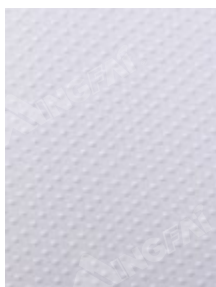


Bone Pattern

Dotted Cloth



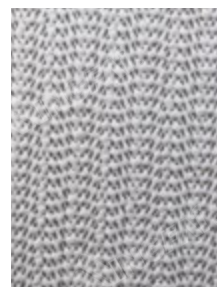
Non-Woven Fabric



Plastic Dot Sole



Reticulate Sole



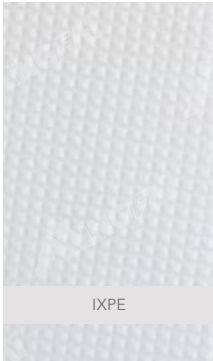
Reticulate Sole

Mesh Bottom

— Velvet Bottom —

— PU Sole —

— IXPE Sole —



Sole performance of different materials

Test site	Test item	Test standard	Test result
Rubber non-slip sole	anti-slip	HG/T 3780-2005 Method 2	Friction coefficient: Dry / dry: 0.70 Wet/wet: 0.62
Dotted soles			Friction coefficient: Dry / dry: 0.77 Wet/wet: 0.71
EVA sole			friction coefficient: Dry / dry: 0.44 Wet/wet: 0.44
IXPE Sole	REACH	181 Substances of Very High Concern (SVHC)	Pass

Binding Materials



Woven Strip



Non-woven Strip



TC Cloth Strip



Double Layer Strip

Package



Drawstring Non-woven
Bag (Both ended)



Drawstring Non-woven
Bag (Single ended)



Pillow Cover Styled Non-woven
Bag (Hot-sealed edges)



Pillow Cover Styled Non-
woven Bag (Sewed edges)



Pillow Cover Styled Organza
Bag (Sewed edges)



Drawstring Satin Bag
(Both-ended)



ENJOY THE LIGHT...

Contact Us

HONG KONG HEAD OFFICE

Address: Unit D3, 8/F, TML Tower, No. 3 Hoi Shing Road, Tsuen Wan, New Territories, Hong Kong
Tel: (852) 2455 4888 Fax: (852) 2462 3343
Email: marketing@mingfaigroup.com

MING FAI INNOVATIVE AND DEVELOPMENT SKIN CARE LAB.

Address: 3/F, Mai Kei Ind. Bldg. No. 5, San Hop Lane, Tuen Mun, N.T. HK
Tel: (852) 2455 4010 Fax: (852) 2455 0921

FACTORY & SHENZHEN OFFICE

Address: Bainikeng, Pinghu, Longgang, Shenzhen PRC
Tel: (86-755) 2880 2888, 2880 2606
Fax: (86-755) 8466 2990-7 (8 Lines)
Email: marketing@mingfaigroup.com

CAMBODIA FACTORY

Address: National Road No.41, Veal Vong Village, Sen Dei Commune, Somrourng Tong District Kampong Speu Province, Kingdom of Cambodia.
Tel: +855 (0)90 739 542 +855 (0)70 279 077
Email: Cambodia@mingfaigroup.com

BEIJING CHINA

Address: Room 910-912, Go High Lanfeng Business Center, NO.98, South Road of the 3rd Ring East, Chaoyang District, Beijing
Tel: (86-10) 8409 4748, 8409 4749, 8409 4960
Fax: (86-10) 8409 4950
Email: bj@mingfaigroup.com

SHANGHAI CHINA

Address: No.36, 2nd Nong, Suide Rd, Putuo Dist., Shanghai
Tel: (86-21) 6608 3201 / 3202 / 3203 / 3205
Fax: (86-21) 6608 3206
Email: sh@mingfaigroup.com

DALIAN CHINA

Address: Rm 2-4-3, Jiahe Flowering Life III, 64 Xinglin Street, Zhongshan Dist., Dalian
Tel: (86-411) 3982 3192, 3982 3193
Fax: (86-411) 3982 3196
Email: dl@mingfaigroup.com

WUHAN CHINA

Address: Rm 603, Block B, Bldg 1, Advanced Business Park, 37 Nanniwan St, 2 Gutian Rd, Qiaokou District, Wuhan, Hubei
Tel: (86-27) 8331 3106, 8331 3216
Fax: (86-27) 8331 3102
Email: wh@mingfaigroup.com

CHONGQING CHINA

Address: 13-4, Industrial Building, 1 Honghuang Road, Jiangbei District, Chongqing
Tel: (86-23) 8606 1288 Fax: (86-23) 8688 8266
Email: cq@mingfaigroup.com

XI'AN CHINA

Address: Rm 21503, Block B, Oak Constellation, No. 3 Keji 5th Rd , High-Tech Zone, Xi'an
Tel: (86-29) 8535 2391, 8535 2392
Fax: (86-29) 8535 2393
Email: xa@mingfaigroup.com

SINGAPORE

Address: 151 Pasir Panjang Road, #03-18 Pasir Panjang Distripark, Singapore 118480
Tel: (65) 6273 6718 (3 Lines) Fax: (65) 6278 8443
Email: emily.tan@mingfaigroup.com

MALAYSIA

Address: Lot 30, Jalan BRP 9/1D, Perusahaan Bukit Rahman Putra, Sungai Buloh 47000, Selangor Darul Ehsan, Malaysia.
Tel: (6-03) 6140 2324 Fax: (6-03) 6140 2353
Email: marketing@q-amenities.com.my

AUSTRALIA

Address: Office 11, Building 6, Garden City Office Park, 2404 Logan Road, Eight Mile Plains QLD 4113, Australia
Tel: (61) 1800 700 360 Fax: (61) 1800 055 538
Email: sales@mf-roommaster.com.au

INDIA

Address: Survey No. 11, 9/1, Vengadu Road, 104, Navalur Village Sriperumbudur Taluk, Kancheepuram, District Pin: 602 105, Tamilnadu, INDIA
Tel: (91) 92 8211 7878
Email: marketing@mingfaigroup.com

www.mingfaigroup.com

MARKETING@MINGFAIGROUP.COM

400-880-8813 (852)2455 4888